

Health and Wellbeing Board Thursday 9th June 2016

Children's Trust Report to the Health and Wellbeing Board

Responsible Officer Karen Bradshaw

Email: karen.bradshaw@shropshire.gov.uk Tel: 01743 254201

1. Summary

The Children's Trust report provides regular assurance to the Health and Wellbeing Board on the work of the Trust and highlights areas for closer consideration by the H&WBB.

2. Recommendations

The H&WBB is recommended to:

- a) Note the information and actions in the report

REPORT

3. Risk Assessment and Opportunities Appraisal

The Children's Trust through its associated health and wellbeing outcomes supports the reduction of inequalities across Shropshire

4. Financial Implications

No financial decisions are explicitly required with this report, there may be associated resource implications to be considered for some actions.

5. Background

The Shropshire Health and Wellbeing Board has delegated the responsibility for the delivery of Priority 3 – Improve the emotional wellbeing and mental health of children and young people, by focussing on prevention and early support, to the Children's Trust.

This report provides the Health and Wellbeing Board with regular assurance from the Children's Trust.

The matters outlined below have been considered at meetings of the Children's Trust:

a) Children's Trust Governance

To provide clarity for partners the governance and reporting lines for the Children's Trust is being strengthened. This has involved:

- A refresh of the Children's Trust terms of reference and membership
The membership now also includes representatives from Social Housing Providers and the Department for Work and Pensions
- A refresh of the Shropshire Children, Young People and Families Plan.
The refresh of the plan is underway. The focus of the plan is on:
 - Family including hidden harm
 - Transition planning and arrangements
 - Emotional / Mental health and wellbeing
 - Strengthening Families Through Early Help
 - Educational Attainment

Each of the Children's Trust sub groups will ensure that they consider and evidence each of the areas of focus above across the work that they do. Task and Finish Groups will be set up on an ad hoc basis where a specific need for a piece of work is identified.

- Accountability and clarification of reporting lines
 - Quarterly updates are provided by each sub group chair
 - Each of the sub groups will undertake an annual deep dive to allow the Children's Trust to monitor progress towards outcomes and examine evidence of effectiveness.

b) Strengthening Families Through Early Help Partnership Sub Group (SFEH)

Following agreement with the partnership groups focussed on early help and strengthening families the two groups formerly known as the Strengthening Families Group and the Early Help Partnership Group have now come together as one partnership group. The Terms of Reference and the membership have also been refreshed and agreed.

SFEH is the first of the sub groups to undertake the deep dive exercise within the Children's Trust meeting planned for July 2016. We will examine closely the:

- 2016/17 Strengthening Families through Early Help Strategy
- Strengthening Families (Troubled Families) phase 2 funding arrangements
- The commissioning of Early Help
- The Strengthening Families Strategic Goals
- The Outcome from the National Review of family distribution across local areas.

And look for clear evidence of progress towards outcomes and effectiveness.

c) 0 – 25 Special Educational Needs and Disabilities (SEND) Strategic Group

The Terms of reference and membership have been refreshed and agreed. The Shropshire Multi Agency 0 – 25 SEND Strategy is being developed.

The SEND 0 – 25 Strategic Group are working with the CCG to ensure robust engagement and representation is in place in key areas that impact on the assessment and decisions for children, particularly recognising the volatile staffing position of the CCG at this point in time. The SEND 0 – 25 Board also noted the current lack of capacity in respect of the Designated Medical Officer role and the future impact on capacity of planned maternity leave.

The Board was pleased to hear that in the academic year 2015 / 16 174 new requests for assessment for children and young people who have complex special needs and/or disabilities resulted in 152 Education, Health and Care Plans. The positive news continued with regard to transfer review assessments and the conversion of SEN Statements to EHCP. Of the 122 EHC Plans that had been finalised 91% of those were issued within 20 weeks.

The digital presence of the Local Offer on the Shropshire Council website continues to improve and we would encourage partners to promote the use of the website not only to families and young people who could benefit from finding services or information, but also to other professionals to support improved knowledge of systems and processes for SEND in Shropshire.

d) 0 – 25 Emotional Health and Wellbeing Partnership Group

The much needed and much welcomed transformation of the Child & Adolescent Mental Health Service (CAMHS) is gathering pace. Progress highlights on the plan are as follows:

- 0-25 Emotional Health and Wellbeing Service (programme 1) – the current CAMHS provision will end on 31 March 2017. The tender process for the service is due to start on 1 April 2017. In order to deliver the range of services efficiently and effectively it would be beneficial if a number of providers would collaborate to deliver the services. Further work is being undertaken with the Voluntary and Community Sector to enable appropriate groups to engage with this process.
- Redesign of Neurodevelopmental pathways (programme 2). It was reassuring to hear that the programme is acting on The Children's Trust Autism Needs Assessment which had highlighted a lack of support and understanding.
- Development programme for workers in universal services (Shropshire). Training support for partner agencies including recruiting within schools.

- Eating Disorder Services – South Staffs Community Trust will work with Shropshire Community Trust to phase in the service. This work commenced on 1 April 2016.
- All Age psychiatric liaison service - will take a holistic approach looking at both the physical as well as mental health needs of young people.
- Improve Perinatal Support – maternity staff and health visiting staff will be upskilled to better support new mothers.

Work is being undertaken to identify appropriate key performance indicators and these will also inform the refresh of the Children, Young People and Families Plan. The Children's Trust will continue to oversee and monitor the impact of this programme for children and young people.

The Children's Trust looks forward to seeing significant improvements in the delivery of CAMHS as the programme takes shape. We expect that an improved service will also lead to a reduction in need of crisis care. However, there will remain a need for provision of Tier 4 beds to meet the needs of very vulnerable young people. As such we would like to raise with the Health and Wellbeing Board our continued concerns on the non-availability of Tier 4 beds for local children and young people and would be grateful for the Health and Wellbeing Board raising this matter with NHS England.

e) Healthy Child Programme Partnership Sub Group

The Pregnancy 0-5 and the 5-19 working groups have identified the following priorities and have undertaken a mapping and gapping exercise to identify service development.

- Smoking cessation particularly in pregnancy
- Breastfeeding improving initiation and duration of breastfeeding. This will include a refresh of the infant feeding strategy that will be led by pregnancy-5 working group on behalf of the HCPP Board.
- Healthy weight and physical activity.

In addition a Multi-agency working group has been set up to develop an accident prevention strategy/action plan. The 0-19 Healthy Child Programme (HCP) workshops are examining how a more joined-up approach to service delivery might be achieved. There is positive news that there may be potential for Shropshire Family Nurse Partnership to take part in a new FNP UK pilot project. Further news is awaited on this.

Options to address the challenges that lie with the funding pressures in relation to Looked After Children and COMPASS are being looked at to ensure full engagement of health visitors and school nurses.

f) Educational Attainment Partnership Sub Group

This is a new sub group and further detail will be provided within my next report to the H&WBB.

g) Task and Finish Groups

- Working together to reduce emergency admissions for unspecified respiratory infection in children (0 – 4) in the north of the County

At each meeting of the Children's Trust discussion is informed by the Joint Strategic Needs Assessment (JSNA). One such discussion has resulted in a joined up piece of work between the Health Economy, Social Housing Providers and the Fire & Rescue Service.

The JSNA data had identified that there are significantly more emergency admissions from acute unspecified lower respiratory infection in the 0-4 year's age group particularly in the North of Shropshire. Interventions to prevent admissions from acute unspecified lower respiratory infection include increasing uptake of breastfeeding, interventions to prevent smoking in the home and the uptake of flu vaccinations in children. Furthermore, discussions between partners at the Children's Trust meeting led to some innovative ideas around social landlords raising awareness through their newsletters and the Fire & Rescue Service including within the wellbeing element of their work. This piece of work is in its infancy but I look forward to bringing you more information in my next report.

6. Additional Information

Children's Trust terms of Reference attached as Appendix A

Children's Trust Work Programme attached as Appendix B

7. Conclusions

The Children's Trust continues to raise challenges across partner agencies.

List of Background Papers (This MUST be completed for all reports, but does not include items containing exempt or confidential information)

Cabinet Member (Portfolio Holder)
--

Local Member

Appendices

Appendix A Children's Trust Terms of Reference
--

Appendix B Children's Trust Work Programme
--

Children's Trust – Terms of Reference

Purpose

The Children's Trust is a partnership forum that works across organisations to ensure the implementation and provision of improved and better joined up services and support for children and families. The Children's Trust will add value to service delivery through partnership working and sharing information; whilst enabling more efficient service delivery, and keeping the protection and safety of children and families at the heart of decision making.

Vision

All children and young people will be healthy, safe and reach their full potential, supported by their families, friends and the wider community.

Role

The Children's Trust will:

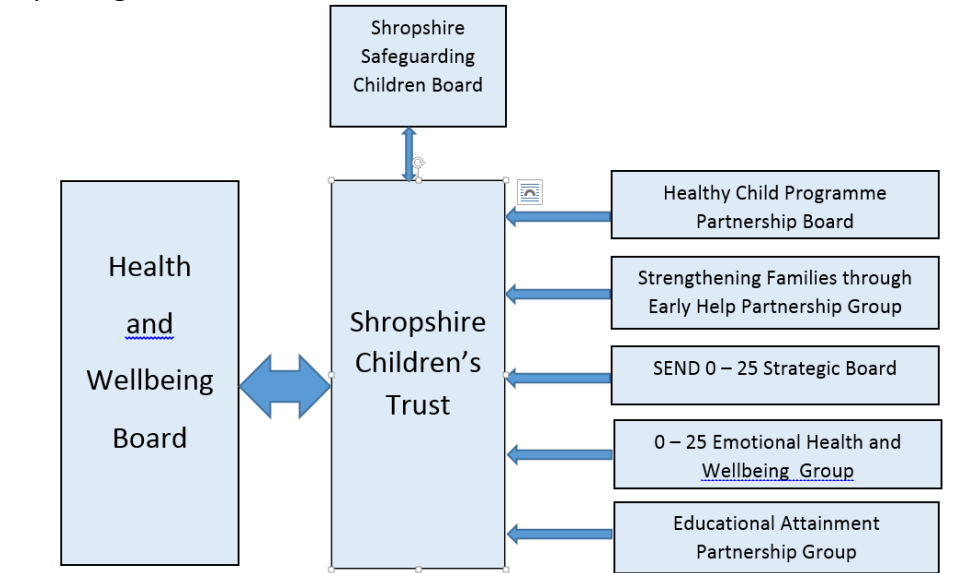
- use an evidence based approach to develop, review, monitor, and ensure delivery of the Children and Young People Strategy,
- receive regular reports from its sub groups to ensure strategies are delivered effectively
- review and refresh the Children and Young People's Strategy and delivery plan on an annual basis,
- Identify joint commissioning of services and develop a joined up approach to some of the challenges faced by children's services, including supporting partners with new initiatives,
- help support the work of Health and Wellbeing Board to ensure the delivery of the Board's outcomes and priorities as they relate to children and young people,
- help support the work of the Health and Wellbeing Board and have responsibility for the action plan and delivery of Priority 3 – Improve the emotional wellbeing and mental health of children and young people, by focussing on prevention and early support,
 - maintain an overview of the work of the Shropshire Safeguarding Children's Board, to support the delivery as required,
 - take into account the views of children, young people, parents and carers and review participation and engagement of these groups across all sectors.
 - actively and routinely engage with young people, hearing their views, understanding needs and how these can best be met
 - share information and data where appropriate and at the appropriate level to make a positive impact on decision making for children and young people's services.
 - Champion partnership working and provide appropriate challenge for agencies to collaborate
 - Provide an assurance report to the Health and Wellbeing Board at least twice per year.

Principles

The Children's Trust will ensure that:

- children and young people's lives, safety, health and wellbeing are at the heart of all decision making,
- decisions are based on evidence and identified need
- collaboration is a starting point for all new or reviewed initiatives; connecting work programmes and improving communication.
- Effective and appropriate communication with all stakeholders is in place

Reporting lines



Membership

Director of Children's Services, SC (Chair)

Director of Public Health, SC

Commissioning and Redesign Lead - Women's and Children's Shropshire CCG

Designated Nurse for Safeguarding, Shropshire CCG

Head of Safeguarding, SC

Chief Fire Officer, Shropshire Fire & Rescue

West Mercia Police

Deputy Director of Operations (Children & Families Services) Shropshire Community Health NHS Trust

Children and Young People's Summit representative (VCSA)

Representative from National Probation Service

Representative from Community Rehabilitation Company

Representative for schools (primary & secondary)

Representative for colleges

Representative of Youth Offending Service

Representative of Department for Work & Pensions

Representative from Housing

Chair of Strengthening Families Through Early Help Sub Group (Head of Safeguarding, SC)

Chair of Healthy Child Programme Partnership Board

Chair of SEND 0-25 Strategic Board

Chair of 0-25 Emotional Health and Wellbeing Group (Shropshire CCG)

Chair of Educational Attainment Partnership Sub Group

1. Member Responsibilities

- Members will ensure true collaboration by contributing agenda items, discussion points, and agreeing actions,
- Members will communicate messages from the Children's Trust appropriately and effectively within their own organisations,
- Members will deliver actions as required by the Children's Trust in a timely manner,
- Members will represent the views of the Trust as required; adhere to the principles of the Trust; and behave in a manner conducive to partnership working and collaboration

2. Operating Procedures

- The chair is the Director of Children's Services, Shropshire Council
- The group meets quarterly
- The group can request task and finish groups to work on specific projects as and when required
- Structure the agenda in advance of meetings with input invited from partners
- The meetings and wider stakeholder engagement will be administered by Shropshire Together (Partnership)
- Members should send deputies if they are not able to attend

3. Review Process

The Terms of Reference will be reviewed at least annually to ensure that the Children's Trust is fit for purpose and able to respond to any changes in the way we work.

Revised May 2016



Children's Trust – Work Programme 2016 / 2017

All children and young people will be happy, healthy, safe and reach their full potential, supported by their families, friends and the wider community

Meetings 2:00 – 4:00pm	20 July 2016 Bridgnorth Room	19 October 2016 Wenlock Room	11 January 2017 Bridgnorth Room	April 2017 Date & Venue TBC
---------------------------	---	---	--	--

	Agenda Item	Purpose of report	Owner
20 July 2016 Deadline for reports 6 th July 2016	Regular feedback item	Feeding back items from the Health & Wellbeing Board, Safeguarding Children Board, Community Safety & Schools	Karen Bradshaw Rod Thomson Sam Scott
	Regular update briefings from Sub Group Chairs or their representative	Monitoring the progress of strategic outcomes and highlighting any issues and actions for the attention of the Children's Trust	Karen Bradshaw Tina Russell Lindsay MacHardy Carol McInnes / Fiona Ellis
	Update on OFSTED	Bringing together information on the preparation for OFSTED inspection on SEND, Single Inspection Framework, Joint Targeted Area and Education	Julia Dean Coleen Male Chris Mathews
	Regular Item - Strengthening Families (Troubled Families Programme)	Regular Item - Strengthening Families (Troubled Families Programme) – items for approval, endorsement and/or agreement Including: a. Strengthening Families (Troubled Families) Phase 2 funding b. Outcome from the National Review of family distribution across local areas. c. Refresh of strategic goals	Kay Smallbone
	Sub Group Deep Dive - Strengthening Families Through Early Help Partnership Group	Including: a. The commissioning of Early Help b. Early Help Action Plan c. Evidence of effectiveness of Early Help	Tina Russell & Sarah Wilkins

	Joint Strategic Needs Assessment	Regular feedback and input from the Children's Trust into the JSNA process JSNA will be considered within discussion of each agenda item	Emma Sandbach
	Regular feed forward item	Summarising items for taking forward to H&W and SSCB HT Forum	Chair Karen Bradshaw
	Agenda Item	Purpose of report	Owner
19 October 2016	Regular feedback item	Feeding back items from the Health & Wellbeing Board, Safeguarding Children Board, Community Safety & Schools	Karen Bradshaw Rod Thomson Sam Scott
Deadline for reports 5 October 2016	Regular update briefings from Sub Group Chairs or their representative	Monitoring the progress of strategic outcomes and highlighting any issues and actions for the attention of the Children's Trust	Karen Bradshaw Tina Russell Lindsay MacHardy Carol McInnes / Fiona Ellis
	Regular Item - Strengthening Families (Troubled Families Programme)	Regular Item - Strengthening Families (Troubled Families Programme) – items for approval, endorsement and/or agreement	Kay Smallbone
	Corporate Parenting Strategy		Steve Ladd
	Sub Group Deep Dive Sub Group to be agreed -	Healthy Child Programme ? SEND 0 – 25 Strategic Board?	
	Joint Strategic Needs Assessment	Regular feedback and input from the Children's Trust into the JSNA process JSNA will be considered within discussion of each agenda item	Emma Sandbach
	Regular feed forward item	Summarising items for taking forward to H&W and SSCB HT Forum	Chair Karen Bradshaw
	Agenda Item	Purpose of report	Owner
11 January 2017	Regular feedback item	Feeding back items from the Health & Wellbeing Board, Safeguarding Children Board, Community Safety & Schools	Karen Bradshaw Rod Thomson Sam Scott
Deadline for reports 22 December 2016			

	Regular update briefings from Sub Group Chairs or their representative	Monitoring the progress of strategic outcomes and highlighting any issues and actions for the attention of the Children's Trust	Karen Bradshaw Tina Russell Lindsay MacHardy Carol McInnes / Fiona Ellis
	Regular Item - Strengthening Families (Troubled Families Programme)	Regular Item - Strengthening Families (Troubled Families Programme) – items for approval, endorsement and/or agreement	Kay Smallbone
	Sub Group Deep Dive 0 – 25 Emotional Health & Wellbeing	0 – 25 Emotional Health & Wellbeing	Carol McInnes - TBC
	Joint Strategic Needs Assessment	Regular feedback and input from the Children's Trust into the JSNA process JSNA will be considered within discussion of each agenda item	Emma Sandbach
	Regular feed forward item	Summarising items for taking forward to H&W and SSCB HT Forum	Chair Karen Bradshaw
	Agenda Item	Purpose of report	Owner
April 2017	Regular feedback item	Feeding back items from the Health & Wellbeing Board, Safeguarding Children Board, Community Safety & Schools	Karen Bradshaw Rod Thomson Sam Scott
	Regular update briefings from Sub Group Chairs or their representative	Monitoring the progress of strategic outcomes and highlighting any issues and actions for the attention of the Children's Trust	Karen Bradshaw Tina Russell Lindsay MacHardy Carol McInnes / Fiona Ellis
	Regular Item - Strengthening Families (Troubled Families Programme)	Regular Item - Strengthening Families (Troubled Families Programme) – items for approval, endorsement and/or agreement	Kay Smallbone
	Sub Group Deep Dive Sub Group to be agreed -	Healthy Child Programme ? SEND 0 – 25 Strategic Board?	
	Joint Strategic Needs Assessment	Regular feedback and input from the Children's Trust into the JSNA process JSNA will be considered within discussion of each agenda item	Emma Sandbach

	Regular feed forward item	Summarising items for taking forward to H&W and SSCB HT Forum	Chair Karen Bradshaw
Reports to be scheduled			
The numbers of Looked After Children placed within Shropshire from other Local Authorities and the implications on services within Shropshire		To be scheduled	
Supporting children and families affected by parental offending		Initial discussions taking place	
Justice Mental Health Provision Report		Raised at CT meeting Jan 2016 – to be scheduled Discuss with Tom Currie, Keith Barham & George Branch	

NB The work programme is a guide for future reports. However, it is a live document and therefore will change to reflect the requirements of the Children's Trust